



Transit Agencies Leading the Transition to ZEBs

What is ZEBRA?

The **Zero Emission Bus Resource Alliance (ZEBRA)** is a professional association for transit agencies in the U.S. and Canada to share lessons learned about zero-emission buses (ZEBs).

ZEBRA is a group of transit leaders exchanging information without the involvement of manufacturers or outside groups. Since 2015, the association has been providing members access to peer information and shared research.

Engagement Opportunities

Virtual Coffee Breaks:

Casual opportunities for members to discuss current industry topics with CTE subject matter experts. In March, ZEBRA hosted a coffee break discussion on hydrogen infrastructure, followed by a session on workforce development in June. Two additional coffee breaks will be held in 2024.

Hydrogen Workgroup:

In July, ZEBRA welcomed the California-established national Hydrogen Workgroup under the ZEBRA umbrella, which aims to increase hydrogen knowledge sharing, provide resources for members, prioritize emerging technologies, and influence the hydrogen market for successful deployments.

A Diverse Group of Peers

ZEBRA represents the collective voice of over 76 transit agencies. Our members represent:

- 650+ ZEBs deployed
- 1,200+ ZEBs in procurement
- 64+ ZEB transition plans (3/4 of Membership)
- 6 hydrogen refueling stations
- 17 upcoming hydrogen refueling stations

2024 Pivoting to Hydrogen Roundtable:

ZEBRA, in partnership with Regional Transit Service in Rochester, NY, hosted a hydrogen-focused roundtable in June. Seven vendors and sponsors spoke on hydrogen bus and fueling infrastructure, OEM updates, and fueling solutions.

2024 Mixed Fleet Roundtable:

ZEBRA, in partnership with The Regional Transportation Commission of Southern Nevada, hosted a mixed fleet roundtable in September. This event will highlight considerations for planning for and operating mixed fleets of battery electric buses (BEBs) and fuel cell electric buses (FCEBs).



Member Benefits

As a ZEBRA member, you have access to the latest resources and best practices offered within the zero-emission industry.

Benefits include:

- Network of 400+ industry peers
- Members-only community portal
- ZEB Performance Dashboard
- Member ZEB and Infrastructure Information Search Tool
- Industry roundtables with vendors/suppliers
- Virtual “coffee breaks” to connect with technical experts and peers
- Quarterly web meetings with technical presentations
- Bi-weekly newsletters
- Resources to use in leadership engagement
- Planning and deployment resources

Member opportunities:

- Connect with early adopters
- Collaborate and share workforce development best practices
- Discuss timely topics in forums
- Leverage shared advocacy resources

Become a ZEBRA Member

ZEBRA allows transit agencies to talk openly about successes and challenges in transitioning to zero-emission technologies. All transit agencies in the United States and Canada are welcome to join!

Micro Agency	<9 bus fleet	\$1000
Small Agency	10-99 bus fleet	\$3500
Large Agency	>100 bus fleet	\$5500
Accredited University/College		\$1500

For more information or to join, visit www.ZEBRAgrp.org or email info@zebragrp.org

“The roundtable is an enriching experience and holistic review with partners and a conversation with peers, on their experience, fears, risks, and opportunities. I would encourage folk to not only join, but also participate and explore fostering partnerships as we navigate the metamorphosis of service provision.”

- Kevin Kibet
Transit Capital Project Manager,
King County Metro (King County, WA)

Member Map

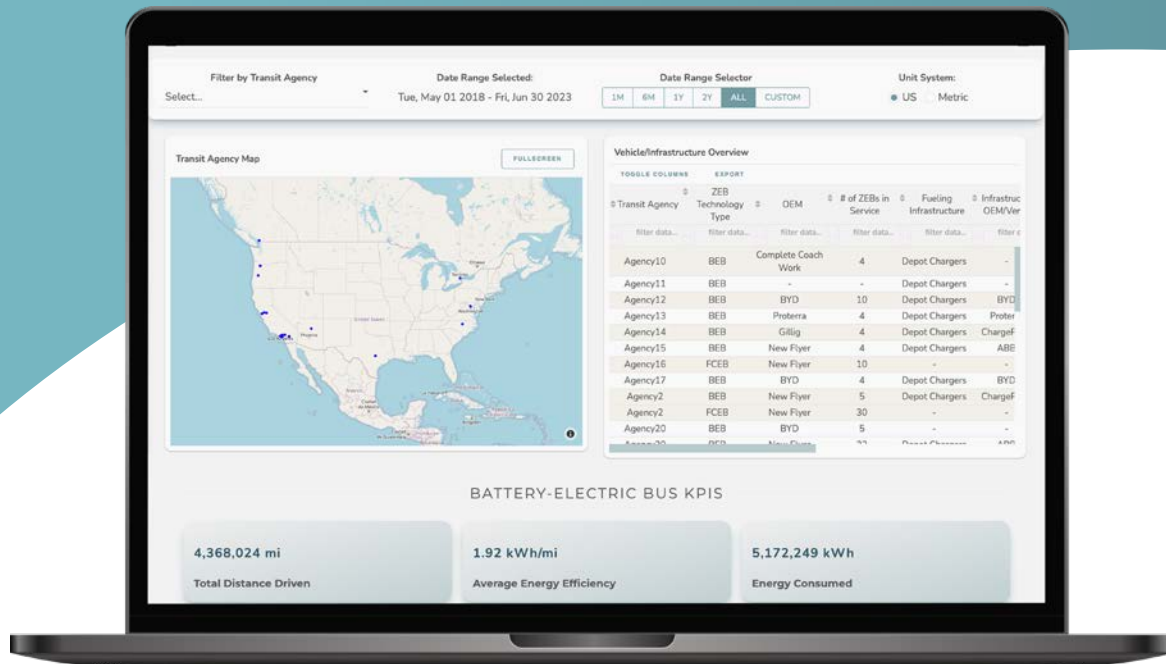
76 Members as of August 2024



ZEB Performance Dashboard and Strategic Tools

The member-exclusive dashboard is one of ZEBRA's core benefits, offering interactive comparisons of operational data from over 23 peer agencies. This powerful tool empowers members to make data-driven decisions and gain a deeper understanding of performance factors across the U.S. and Canada.

Additionally, ZEBRA's ZEB & Infrastructure Search Tool enables members to access and compare information on various ZEB technologies, including ZEB type, length, OEM, depot charger OEM, connection type, on-route charger type, and hydrogen fuel source. This feature allows for tailored comparisons applicable to each agency's needs.



Technical Assistance

The Center for Transportation and the Environment (CTE) is a national non-profit that works on behalf of ZEBRA's membership to provide technical assistance and industry expertise based on more than 30 years of experience in clean transportation technologies.

CTE has provided technical and management support to more than 100 operators that have either deployed, or will soon deploy, more than 1,000 zero-emission vehicles.

A few of the services CTE provides to ZEBRA members:

- Strategic tools for ZEB deployment planning
- Technical expertise and support
- Representation of group interests in charging and H2 fueling discussions
- Advocacy relationships and alignment of priorities with ZEBRA

